



## UNIVERSAL DUAL CAB UTE ADVENTURE RACK

### **IMPORTANT! – READ BEFORE INSTALLATION**

- This product must be installed exactly as per these instructions using only hardware supplied.
- Take a few moments to read instructions thoroughly before beginning work.
- In the event of damage to any component please contact OFFROAD ANIMAL to arrange repair/replacement of components.
- Do not remove labels from this product.
- This product and its fixings must not be modified in any way unless stated in these fitting instructions.
- The installation of this product is recommended for trained personnel.
- These instructions are correct at time of publication. OFFROAD ANIMAL cannot be held responsible for the impact of any changes subsequently made by the vehicle manufacturer. If you find something has changed please contact us to let us know!
- During installation it is the duty of the installer to check correct operation/clearances of all components.
- If Instructions are to be printed for reference in the workshop, it is recommended that they are printed in colour, for best legibility.
- **Approx. Install Time 2 Hours**

# PARTS LISTING

**IMPORTANT:** Check all parts are present before beginning work! Contact OFFROAD ANIMAL if something is missing.

## Base Kit Main Parts – In the Box

Qty	Part Number	Description	Image
2	ADVR-DC-COM-ASM2L	Adventure Rack- Side Arm Assy Left Hand	
2	ADVR-DC-COM-ASM2R	Adventure Rack- Side Arm Assy Right Hand	
2	B-0357	Flat side Basket- Adv Tub Rack	
2	ADVR-DC-COM-ASM3	Adv Rack Tub Rail Assy	
1	B-0354	Adv Rack- Centre Basket	

<b>Optional Extra 1</b>	TR-FRA	Roller shut kit <b>Optional extra</b>	
-------------------------	--------	---------------------------------------	--

### Base Kit Small Parts – Contained in Small Parts Kit Bag

Qty	Part Number	Description
10	M8 FLAT WASHER- ZINC HD	M8 FW- ZINC- HD
4	M8x20 Cap Screw	Cap Screw, M8x20 Cap screw
12	M8 X 16 BHCS BLACK ZINC	SCREW, BUTTON HEAD CAP, M8X16X1.25 BLACK ZP
20	M8 FLANGE NUT	Flange Nut, M8x1.25 G8.8 ZP
26	M8 FLAT WASHER- BLACK ZINC	M8 FW- BLACK ZINC-
16	M6 FW BZ	M6 Flat washers black zinc
16	M6x16 BHCS Black Zinc	M6 FW Black ZP
6	M8 x 45 BHCS BZ	M8 x45 Button head cap screw Black Zinc
6	M8 NN	M8 Nyloc nut
8	M8 x 20 BHCS BZ	M8 x 20 button head cap screws black zinc
2	OFA-LOGO	OFFROAD ANIMAL METAL LOGO

## TOOLS REQUIRED

The following tools will be required to install the product.

<b>Hand Tools</b>	<b>Power Tools</b>	<b>Workshop Equipment</b>
Hex (Allen) Key Set 4-6mm Metric Socket Set 10-13mm	Electric Drill 9mm drill bit	Paint pen or Permanent Marker Centre punch

# WORKSHOP SAFETY

It is the responsibility of the installer to always complete works in a safe manner. Make sure the following safety equipment is available and precautions are observed whilst fitting this product.

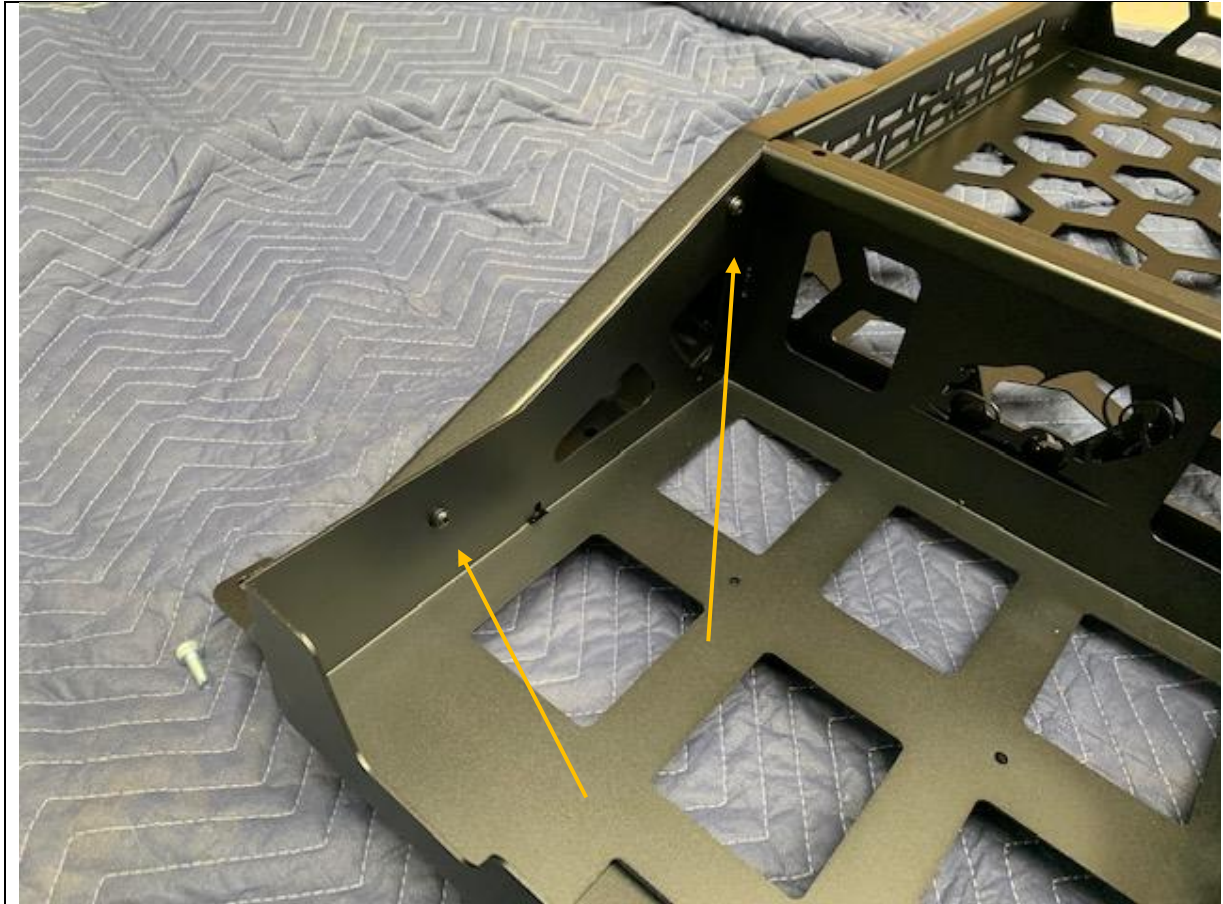
<p>Hearing Protection</p> 	<p>Always wear ear protection when using power tools.</p>
<p>Eye Protection</p> 	<p>Ensure eye protection is always worn when cutting or drilling.</p>
<p>Manual Handling</p> 	<p>Do not attempt to lift bar assemblies or rock sliders on your own.</p> <p>Always use two people to lift or use mechanical Lifting aid such as hydraulic lifting trolley.</p>
<p>Vehicle Support</p> 	<p>Always ensure vehicle is properly supported when working on it. Do not attempt to fit products whilst suspension work is being carried out. Do not work under a vehicle supported only by a jack.</p>



1. Start by assembling the Adventure rack on the ground, away from the vehicle. Make sure everything is accounted for.

**TOOLS REQUIRED**

**FASTENERS**



2. Fit side arm to flat basket with M6 button head cap screw and washers. Leave bolts loose
3. Do LH and RH
4. Repeat for other side

**TOOLS REQUIRED**

**4mm Hex Key**

**FASTENERS**

M6x16 Button head bolt (16)

M8 Flat Washer (16)



5. Slide side arm assembly over centre basket as shown and loosely fit M8 hardware to keep arm attached. Leave all hardware loose

**TOOLS REQUIRED**

**FASTENERS**

- M8x16 Button head bolt (6)
- M8 Flange Nut (6)
- M8 Flat Washer (6)





6. Repeat for other side.
7. The Adventure rack is now ready to lift on to your tub, but first we need to install the mounts

**TOOLS REQUIRED**

**FASTENERS**

M8x16 Button head bolt (6)  
M8 Flange Nut (6)  
M8 Flat Washer (6)



8. Follow steps 8-18 if fitting Adventure rack to a tub with no roller shutter. Place Assy side rail on to tube where you want the adventure rack to sit.
9. If fitting Adventure rack to a roller shutter skip to step 19

**TOOLS REQUIRED**  
G Clamps or Vice Grips  
Marker

**FASTENERS**



10. Mark at least 3 locations on top, and a minimum of one on each side but 2 would be better. Do this for one side only
11. Center punch all hole locations
12. Drill 9mm diameter hole through locations marked and punched. On top face ensure hole goes through both layers of tub.
13. Paint all exposed edges with paint pen to prevent corrosion.
14. Secure with M8x45 Button head bolts, flat washers and Nyloc Nuts, through top face and M8x20 Button head bolts, flat washers and Nyloc Nuts through the side face.

**TOOLS REQUIRED**

- Drill
- 9mm Drill Bit
- Center Punch
- Paint Pen

**FASTENERS**

- M8x45 Button Head
- M8x20 Button Head
- M8 Flat Washer
- M8 Flange Nut



15. With assistance from a friend, fit Adventure rack to tub.
16. Position other side Rail Assembly and mark and drill as per last page
17. Secure with M8x45 Button head bolts, flat washers and Nyloc Nuts, through top face and M8x20 Button head bolts, flat washers and Nyloc Nuts through the side face.
18. Tighten all bolts, using 5mm Hex key and 13mm spanner

**TOOLS REQUIRED**

- Drill
- 9mm Drill Bit
- Center Punch
- Paint Pen
- 5mm Hex Key
- 13mm Spanner or socket

**FASTENERS**

- M8x45 Button Head
- M8x20 Button Head
- M8 Flat Washer
- M8 Flange Nut



19. If fitting onto a roller shutter you will need our straight or angled roller shutter mounts depending on which roller shutter you have. Installation is the same for both

**TOOLS REQUIRED**

**FASTENERS**



20. Fit small rectangular nuts into slot on roller shutter (6) per side

**TOOLS REQUIRED**

**FASTENERS**

M6 nut plates



21. Lift mounting rails onto roller shutter and secure with M6 hardware
22. Repeat for other side. These are handed so make sure you position them correctly as you want it to sit on the Ute with the adventure rack in the position you desire

**TOOLS REQUIRED**

- 4mm Hex key
- 13mm spanner

**FASTENERS**

- 12x M6x12 Button head bolt
- 12x M6 Flange Nut
- 12x M6 Flat Washer



23. Drop Tub Rail assy on top roller shutter mount and secure with at least 4 M8 screws per side

**TOOLS REQUIRED**  
5mm Hex key

**FASTENERS**  
3x M8x20 Button head bolt  
3x M8 Flat Washer





24. Repeat for other side

**TOOLS REQUIRED**

5mm Hex key

**FASTENERS**

3x M8x20 Button head bolt

3x M8 Flat Washer



- 25. Lift Adventure Rack on to Assy Rail
- 26. Feed M8 Cap screws into end and secure down using heavy duty washers

**TOOLS REQUIRED**  
6mm Hex key

**FASTENERS**  
4x M8x20 Socket screw  
4x M8 HD Flat Washer



- 27. Spread out the Rack so both ends of the rack fit the Rails
- 28. Torque down all bolts

**TOOLS REQUIRED**

- 5mm Hex key
- 13mm spanner

**FASTENERS**

- 4x M8x20 Button head bolt
- 4x M8 Flange Nut
- 4x M8 Flat Washer



29. If fitting small space case to flat basket, you'll need to drill holes in from inside box and secure down. This will allow you to open the box without removing it, and prevent it from being stolen

**TOOLS REQUIRED**  
**Drill**  
**9mm drill bit**

**FASTENERS**



30. If fitting Jerry cans , just pop them up on to the flat rack and sure with a ratchet strap

**TOOLS REQUIRED**

**FASTENERS**



31. The centre basket has many slots for mounting any accessory you want. Shown above is a Hi-lift jack and shovel holder purchased off Ebay.

**TOOLS REQUIRED**

**FASTENERS**



32. IF fitting centre space case, secure down with ratchet strap running from handle to handle underneath rack so you can still open the box

**TOOLS REQUIRED**  
**Ratchet Strap**

**FASTENERS**



You're all set now, go out and enjoy your new rack.