



Jeep Grand Cherokee WK2

MY2011-2019

Recovery Points



IMPORTANT! – READ BEFORE INSTALLATION

- This product must be installed exactly as per these instructions using only hardware supplied.
- Take a few moments to read instructions thoroughly before beginning work.
- In the event of damage to any component please contact OFFROAD ANIMAL to arrange repair/replacement of components.
- Do not use this product for any vehicle make or model other than that specified on these instructions.
- Do not remove labels from this product.
- This product and its fixings must not be modified in any way unless stated in these fitting instructions.
- The installation of this product is recommended for trained personnel.
- These instructions are correct at time of publication. OFFROAD ANIMAL cannot be held responsible for the impact of any changes subsequently made by the vehicle manufacturer. If you find something has changed please contact us to let us know!
- During installation it is the duty of the installer to check correct operation/clearances of all components.
- If Instructions are to be printed for reference in the workshop, it is recommended that they are printed in colour, for best legibility.

PARTS LISTING

IMPORTANT: Check all parts are present before beginning work! Contact OFFROAD ANIMAL if something is missing.

Main Parts – In the Box

Qty	Part Number	Description	Image
4	P-0004	WK2 Tow Point	
4	P-0005	Wk2 Tow Point Spacer	

Small Parts – Contained in Small Parts Kit Bag

Qty	Part Number	Description
4	M10 x 80 (10.9)	M10 x 80 Hex bolt 10.9 zinc plate
4	M10 FW	M10 Flat washer

TOOLS REQUIRED

The following tools will be required to install the product.

Hand Tools	Power Tools	Workshop Equipment
10mm Spanner 16mm Spanner 10mm Socket 13mm Socket 16mm Socket Ratcheting Socket Wrench	None	None

GENERAL WARNINGS

These tow points are rated to 4T when used correctly. That is two points stacked together with 2 spacers and grade 10.9 bolts

It is always recommended to use an equalizing strap and pull from both LH and RH tow points at the same time.



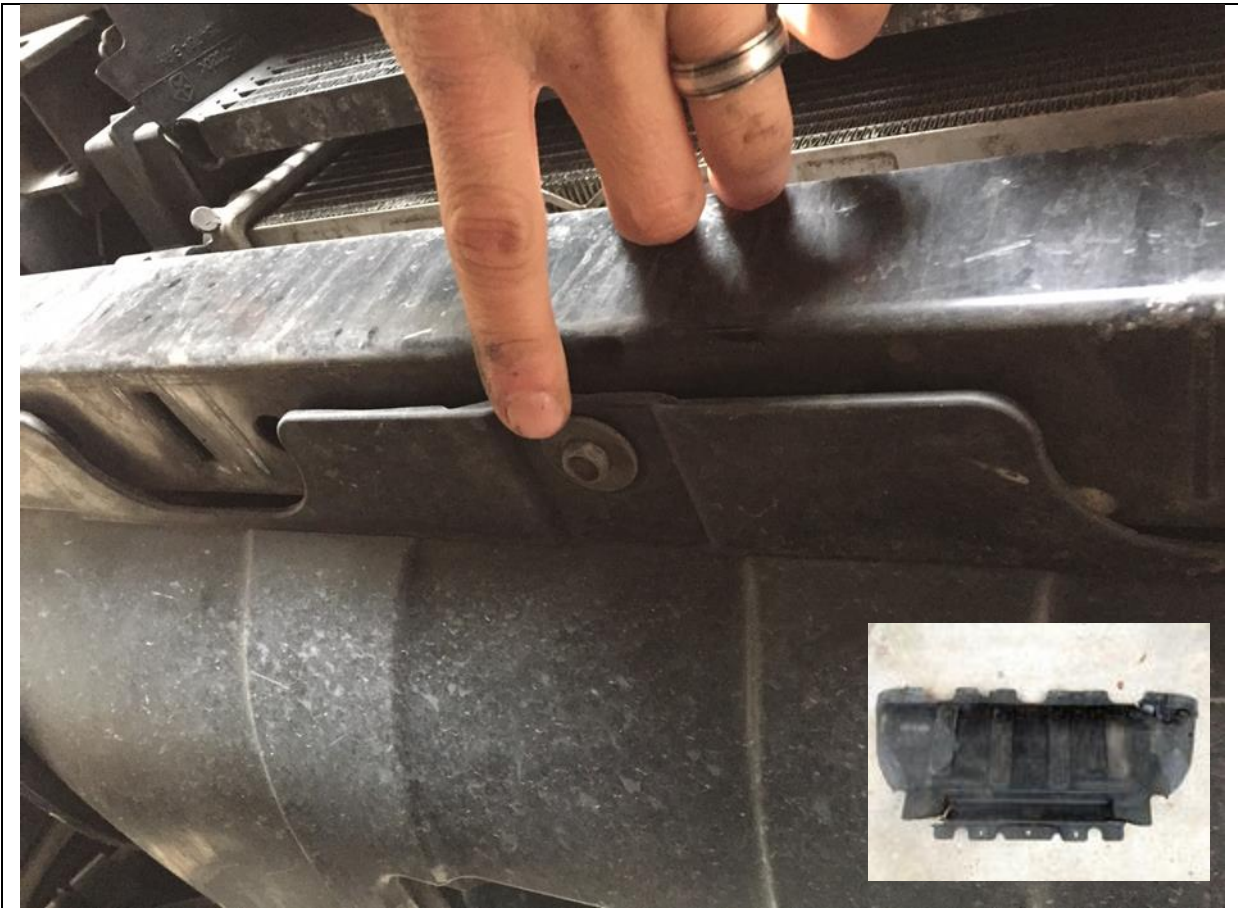
1. First step is to remove the lower air damn fascia. To do this climb under your Jeep and remove all 5 quarter turn clips by hand. Two are tucked up high in each corner and 3 in the middle
2. Once they are removed pull the entire lower air damn away from Jeep by hand.

TOOLS REQUIRED

None

FASTENERS

Retain



3. Remove factory Lower Radiator Cover. 3x M6 bolts on front and 2x M8 bolts on back. Use 10mm socket or spanner for front and 13mm for rear

TOOLS REQUIRED

10mm Socket or Spanner
13mm Socket or Spanner

FASTENERS

Retain for reuse



4. Remove factory tie down and or tow points

TOOLS REQUIRED

FASTENERS

Discard fasteners



5. Stack Offroad Animal Tow points together as shown with M10 bolts and M10 flat washers.

TOOLS REQUIRED

FASTENERS

M10x80 Hex bolts (4)
M10 Flat Washers (4)



6. Fit Offroad Animal Tow points as shown on LH and RH side with M10x80 bolts directly into frame of Jeep. Torque down bolts

TOOLS REQUIRED

16mm Socket or Spanner

FASTENERS

M10 x 80 (4)
M10 Flat washers (4)



7. Locate clearance windows as shown.

TOOLS REQUIRED

FASTENERS



8. Push out panels to allow tow points to pass through. If yours do not push out, you will need to cut an access window in this area

TOOLS REQUIRED

FASTENERS



9. Refit lower skid and air damn with factory hardware.
10. You're now down. Enjoy your new tow points and always pull from both points with an equalizing strap

TOOLS REQUIRED

- 10mm spanner or socket**
- 13mm spanner or socket**

FASTENERS

Factory hardware