



Jeep Wrangler JK

MY2007-2018

Predator bull bar

IMPORTANT! – READ BEFORE INSTALLATION


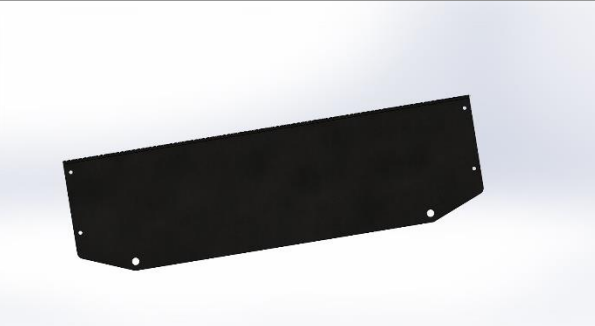
- When installed in accordance with these instructions, the front protection bar does not affect the operation of the vehicles SRS airbags.
- This product must be installed exactly as per these instructions using only hardware supplied.
- Take a few moments to read instructions thoroughly before beginning work.
- In the event of damage to any component please contact OFFROAD ANIMAL to arrange repair/replacement of components.
- Do not use this product for any vehicle make or model other than that specified on these instructions.
- Do not remove labels from this product.
- This product and its fixings must not be modified in any way unless stated in these fitting instructions.
- The installation of this product is recommended for trained personnel.
- These instructions are correct at time of publication. OFFROAD ANIMAL cannot be held responsible for the impact of any changes subsequently made by the vehicle manufacturer. If you find something has changed please contact us to let us know!
- During installation it is the duty of the installer to check correct operation/clearances of all components.
- If Instructions are to be printed for reference in the workshop, it is recommended that they are printed in colour, for best legibility.
- Estimated install time: 2 hours

PARTS LISTING

IMPORTANT: Check all parts are present before beginning work! Contact OFFROAD ANIMAL if something is missing.

Main Parts – In the Box

Qty	Part Number	Description	Image
1	FB-JWR-JK-07-PR-ASM1	JK Bull bar Predator weldment	
1	B-0106R	Fog light mount LH	
1	B-0106L	Fog light mount RH	
1	B-0107L	Jk wing brace LH	

1	B-0107R	JK wing brace RH	
1	M-0002L	Light Cover Mesh LH	
1	M-0002R	Light Cover Mesh RH	
1	Optional part winch delete plate B-0110	JK winch delete plate	
1	Optional part Stealth hoop TB-COM- JK-ASM1	Top tube JK stealth	

<p>1</p>	<p>OPTIONAL PART ROUND TOP TUBE TB-COM- JK-RD- ASM1</p>	<p>JK ROUND TUBE 3 IN</p>	
<p>1</p>	<p>OPTIONAL PART SKID PLATE KIT U-0004</p>	<p>JK skid plate</p>	
<p>2</p>	<p>OPTIONAL PART SKID PLATE KIT NP-COM- M10-190- ASM0</p>	<p>M10 LOLLYPOP NUT PLATE 190MM LONG</p>	
<p>1</p>	<p>OPTIONAL PART SKID PLATE KIT B-0109L</p>	<p>SKID PLATE MNT BRACKET LH</p>	
<p>1</p>	<p>OPTIONAL PART SKID PLATE KIT B-0109R</p>	<p>SKID PLATE MNT BRACKET RH</p>	

Small Parts – Contained in Small Parts Kit Bag

Qty	Part Number	Description
8	M10 x 30	M10 x 30 Hex Bolt Z/p
8	M10 SW	M10 Spring Washer
8	M10 FW	M10 Flat Washer
8	M6x16 bhcs bz	M6 x 16 Button Head Cap screw black zinc
8	M6 FW bz	M6 Flat washer black zinc
8	M6 FN	M6 Flange nut
4	M8 FW BZ	M8 flat washer black zinc
4	M8 x 20 BHCS BZ	M8 x 20 button head cap screw black zinc
10	M8 FN	M8 Flange nut
6	M8 x 25	M8 x 25 Hex bolt zp
6	M8 FW	M8 Flat washer
8	M4 x 20 Pan	M4 x20 Pan head screw Philips
8	M4 FN	M4 flange nut
1	FB-JWR-JK-07-PR-ADRCP	ADR Compliance plate JK bar
1	ORA logo	Offroad animal logo plate

Optional Small Parts kit for Skid Plate

Qty	Part Number	Description
4	M8 x 30 BHCS BZ	M8 x 30 Button Head Cap Screw Black Zinc
4	M8 FW BZ	M8 flat washer black zinc
2	M10 x 25 BHCS	M10 x 25 Button head cap screw ZP
4	M10 FW	M10 Flat washer
2	M10 FN	M10 Flange nut
2	M10 x 30	M10 x 30 hex bolt zp

Small Parts kit for Winch delete Plate

Qty	Part Number	Description
4	M6 FN	M6 flange nut
4	M6 x 20 BHCS BZ	M6 x 20 Button head cap screw black zinc
4	M6 FW BZ	M6 flat washer black zinc

Small Parts kit for Stealth Top Tube

Qty	Part Number	Description
2	M10 FW	M10 Flat washer
2	M10 x 30	M10 x 30 Hex bolt zinc plate
2	M10 NY	M10 Nyloc Nut
2	M10 SW	M10 spring washer

Small Parts kit for Round Top Tube

Qty	Part Number	Description
2	M12 FW	M12 Flat washer
2	M12 x 30	M12 x 30 Hex bolt zinc plate
2	M12 SW	M12 Spring washer

TOOLS REQUIRED

The following tools will be required to install the product.

Hand Tools	Power Tools	Workshop Equipment
Allan keys 4,5,6mm Spanners 10mm + 13mm + 15mm + 16mm + 17mm + 18mm Phillips head screw driver Trim tool, or flat head screw driver	Angle grinder (depending on winch)	Black paint

GENERAL WARNINGS

No warnings for this product



1. Start by removing screws behind fog lights

TOOLS REQUIRED

Phillips head screw driver

FASTENERS

discard



2. Unplug loom for fog lights

TOOLS REQUIRED

FASTENERS



3. In front of grill remove 2 clips with trim tool or flat screw driver

TOOLS REQUIRED

Trim tool, or flat head screw driver

FASTENERS

Discard fasteners



- 4. Behind bumper at edges you will need to pry up piece shown

TOOLS REQUIRED

Trim tool, or flat head screw driver

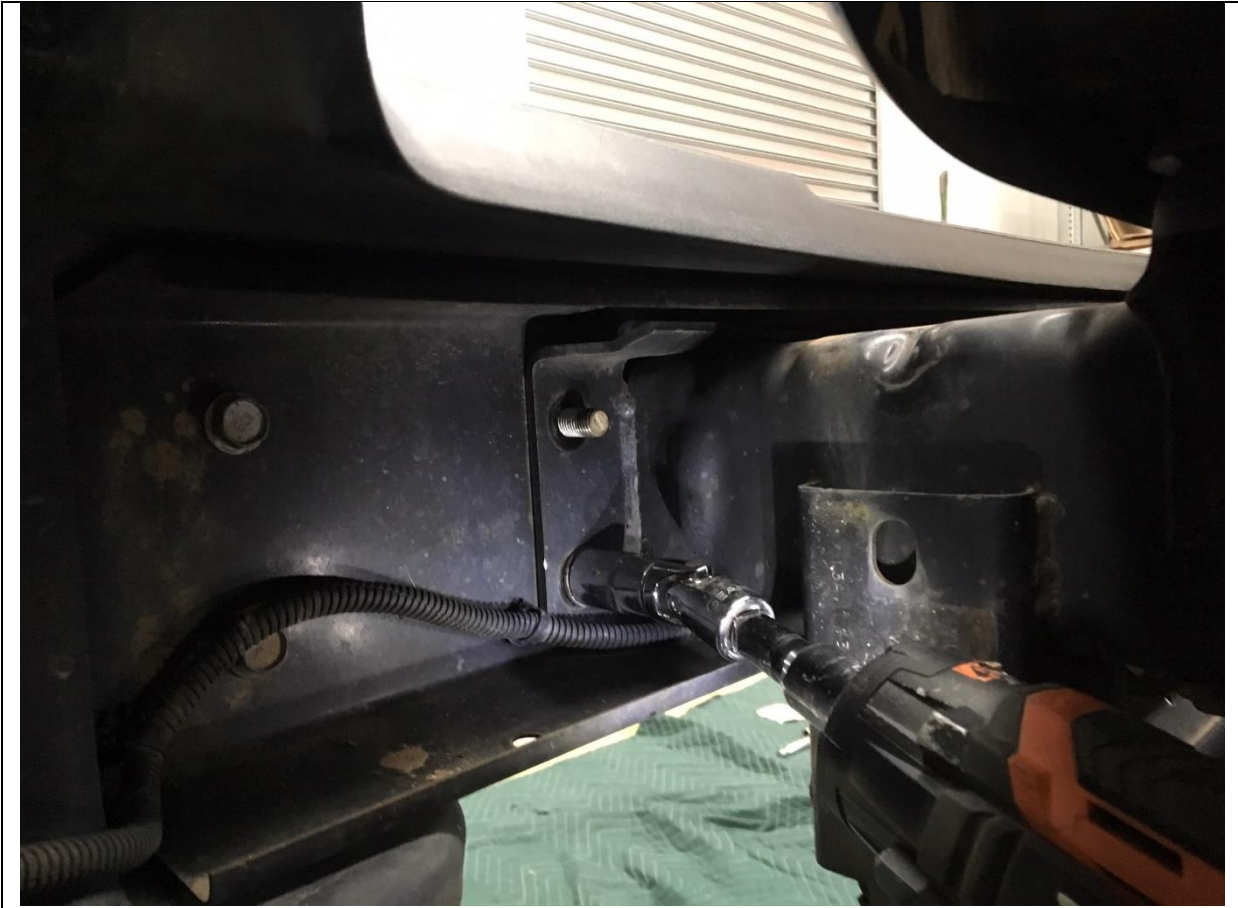
FASTENERS



5. Remove panel shown, but tilting it up and angling it out

TOOLS REQUIRED

FASTENERS



6. Remove 8 x M10 nuts holding bumper on to chassis

TOOLS REQUIRED

16mm socket and spanner

FASTENERS

discard



7. Pull bumper away from chassis and pry off loom retaining clips with multigrips or screw driver

TOOLS REQUIRED
Trim tool, or flat head screw driver
Or Multi grips

FASTENERS



8. Here is what your front end will look like with bumper removed

TOOLS REQUIRED

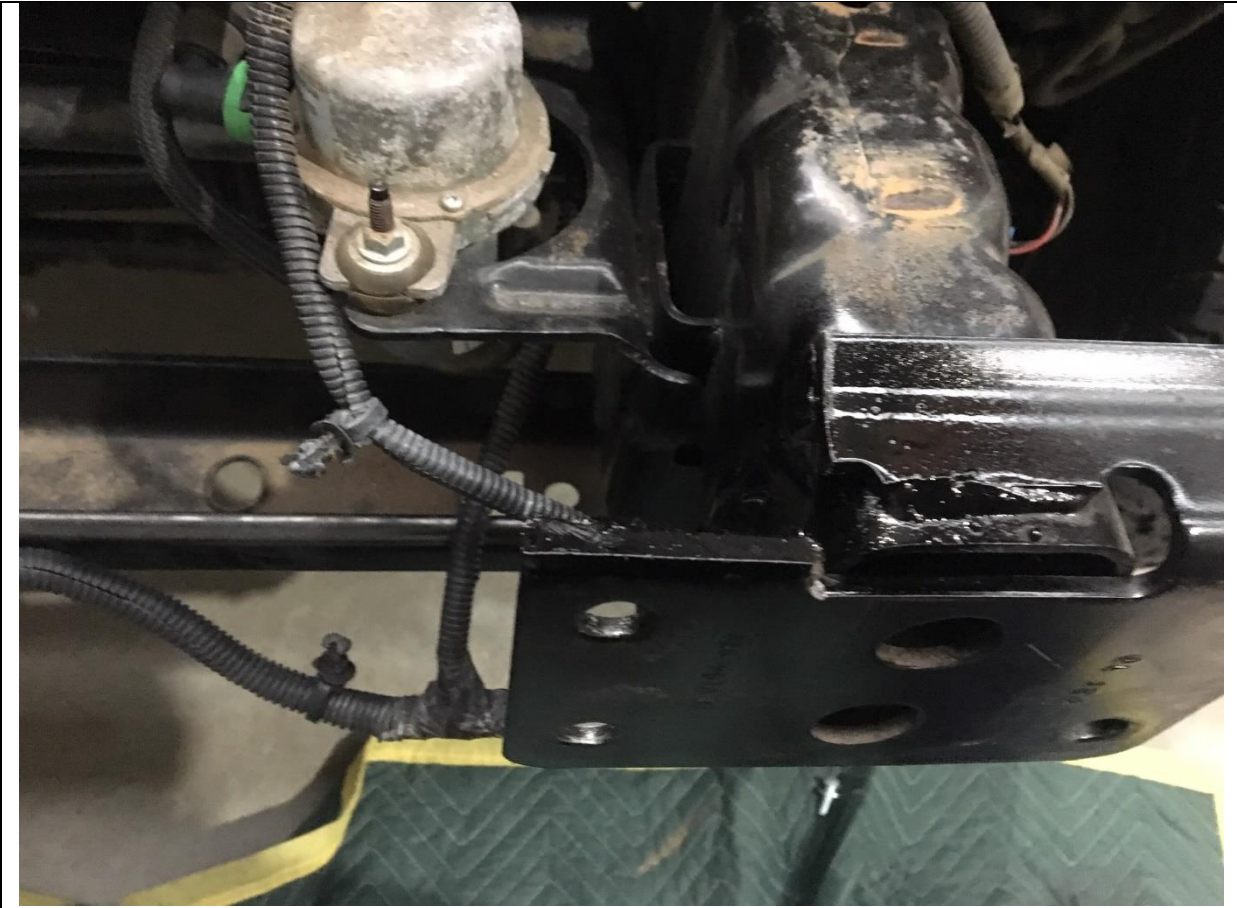
FASTENERS



9. Depending on winch fitting you may need to trim part of chassis shown. Best is to test fit bull bar then drop winch in place and see if it contacts chassis, if so mark chassis with paint pen and cut with angle grinder.
10. Remember to paint exposed cut edges. If winch clears chassis skip this and next step

TOOLS REQUIRED
Paint pen, + angle grinder

FASTENERS



11. If cutting chassis don't forget to paint exposed edges

TOOLS REQUIRED

Black Paint

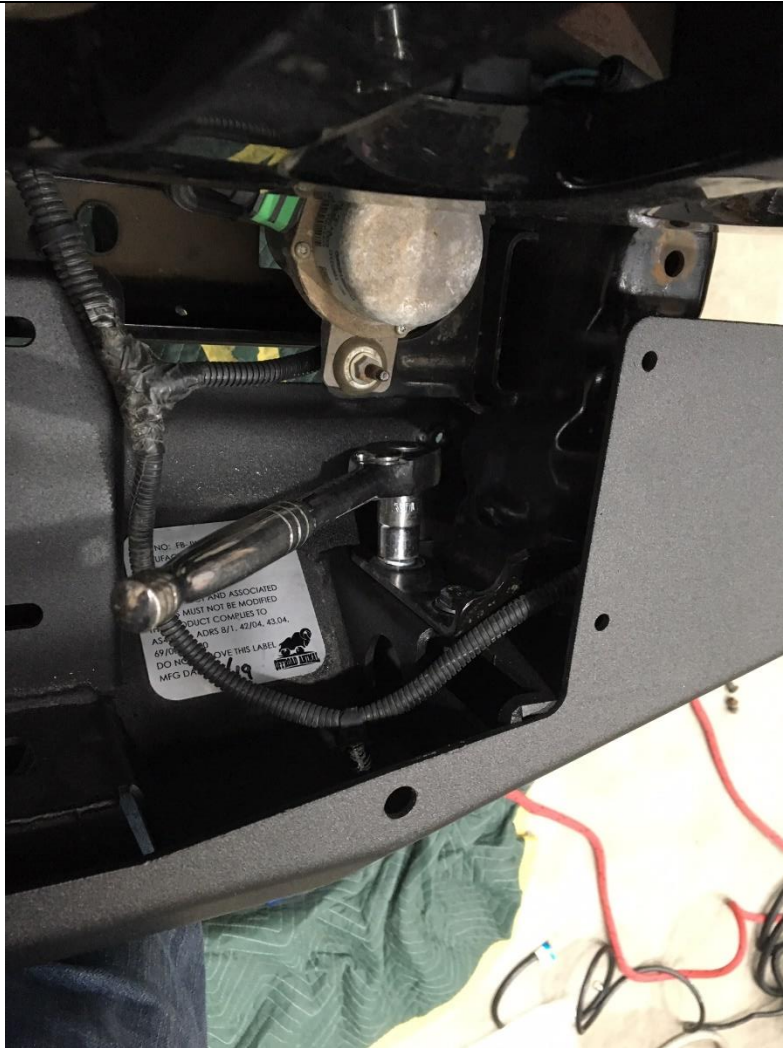
FASTENERS



12. Also so winches will require the thread on the Vacuum pump bolt to be trimmed. Drop winch on and see if it contacts this thread (most winches will not touch) If so trim with angle grinder.

TOOLS REQUIRED
Angle Grinder

FASTENERS



13. Put bull bar on to vehicle and use M10 x 30 bolts, spring washers and flat washers to secure to vehicle

TOOLS REQUIRED

16mm Spanner and or Socket

FASTENERS

M10 x 30 (4)
M10 SW (4)
M10 FW (4)



14. Re fit horn to original location and use M10 bolts as per LHS. If fitting a winch push the horn down as far as possible with your hand bending its bracket

TOOLS REQUIRED
16mm Spanner and or Socket

FASTENERS
M10 x 30 (4)
M10 SW (4)
M10 FW (4)



15. If fitting factory fog lights, do so now to supplied brackets with M4 hardware as shown

TOOLS REQUIRED
Phillips head screw driver

FASTENERS
M4 x 20 PH (8)
M4 FN (8)



16. Next fit fog light bracket to mesh panel and secure with 1 M8 bolt washer and flange nut on the top. The front will be secured through bar in next step

TOOLS REQUIRED

13mm socket or spanner

FASTENERS

M8 x 25 (2)
M8 FW (2)
M8 FN (2)



- 17. Position light and mesh up to bar from behind and secure with M6 BHCS washers and flange nuts
- 18. Repeat for other side

TOOLS REQUIRED

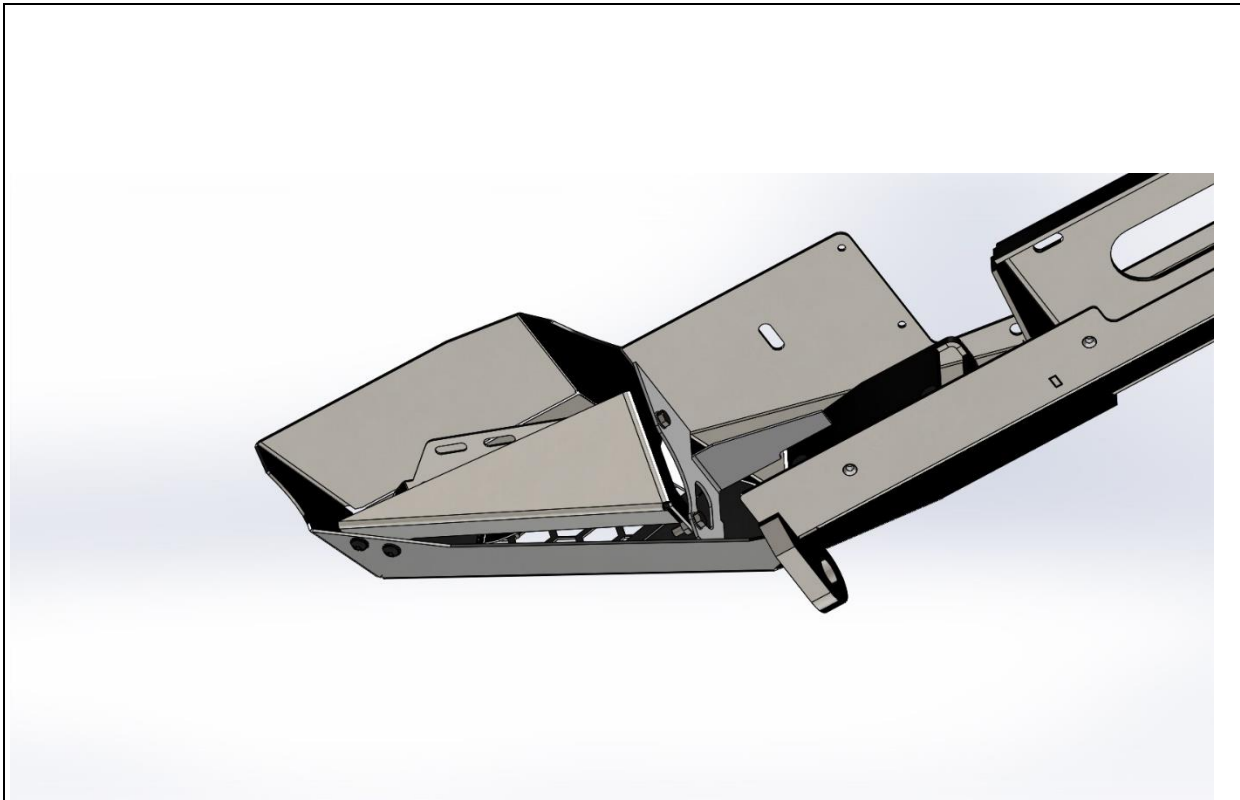
4mm Allen Key

FASTENERS

M6 x 16 BHCS BZ (8)

M6 FW BZ (8)

M6 FN (8)



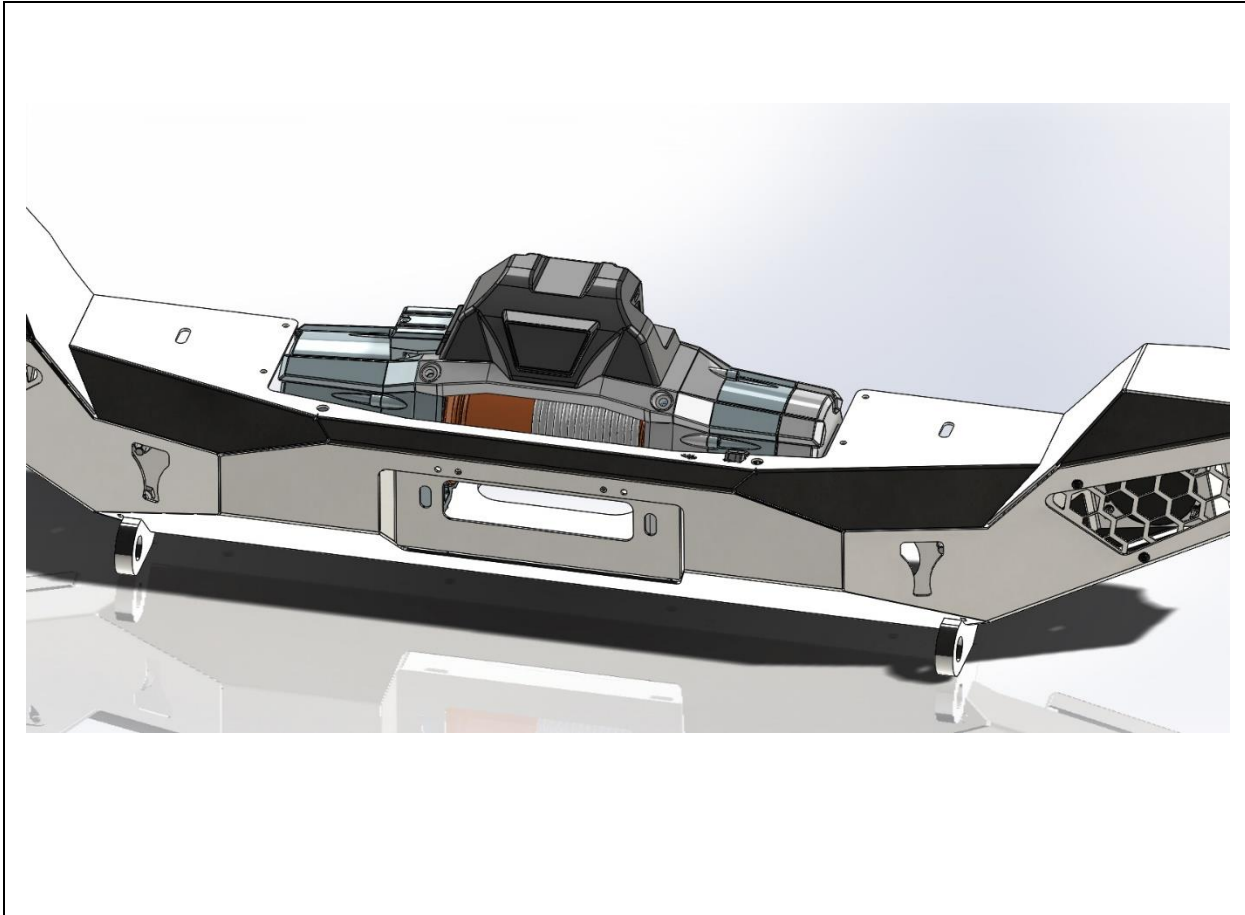
- 19. Position wing brace as shown, and secure with M8 bhcs through bottom, and hex bolts through sides
- 20. Repeat for other side

TOOLS REQUIRED

- 5mm Allen Key**
- 13mm Spanner**

FASTENERS

- M8 x 20 BHCS (4)
- M8 FW (8)
- M8 x 25 (4)
- M8 FN (8)



21. If fitting a winch drop winch in from top, and used bolts supplied with winch to secure to cradle from underneath

TOOLS REQUIRED
Depends on hardware supplied with winch

FASTENERS
Supplied with winch



22. Fit winch fairlead as shown with hardware supplied with winch

TOOLS REQUIRED

Depends on kit supplied with winch

FASTENERS

Supplied with winch



- 23. If fitting optional stealth hoop, position it on top as shown and secure with M10 hardware, with nut from below
- 24. Put logo plate on the front

TOOLS REQUIRED

16mm spanner + 17mm spanner

FASTENERS

- M10 x 30 Hex bolt (2)
- M10 FW (2)
- M10 SW (2)
- M10 NY (2)



25. If fitting Optional round top hoop, fit as shown, with M12 hardware coming from underneath

TOOLS REQUIRED

18mm spanner

FASTENERS

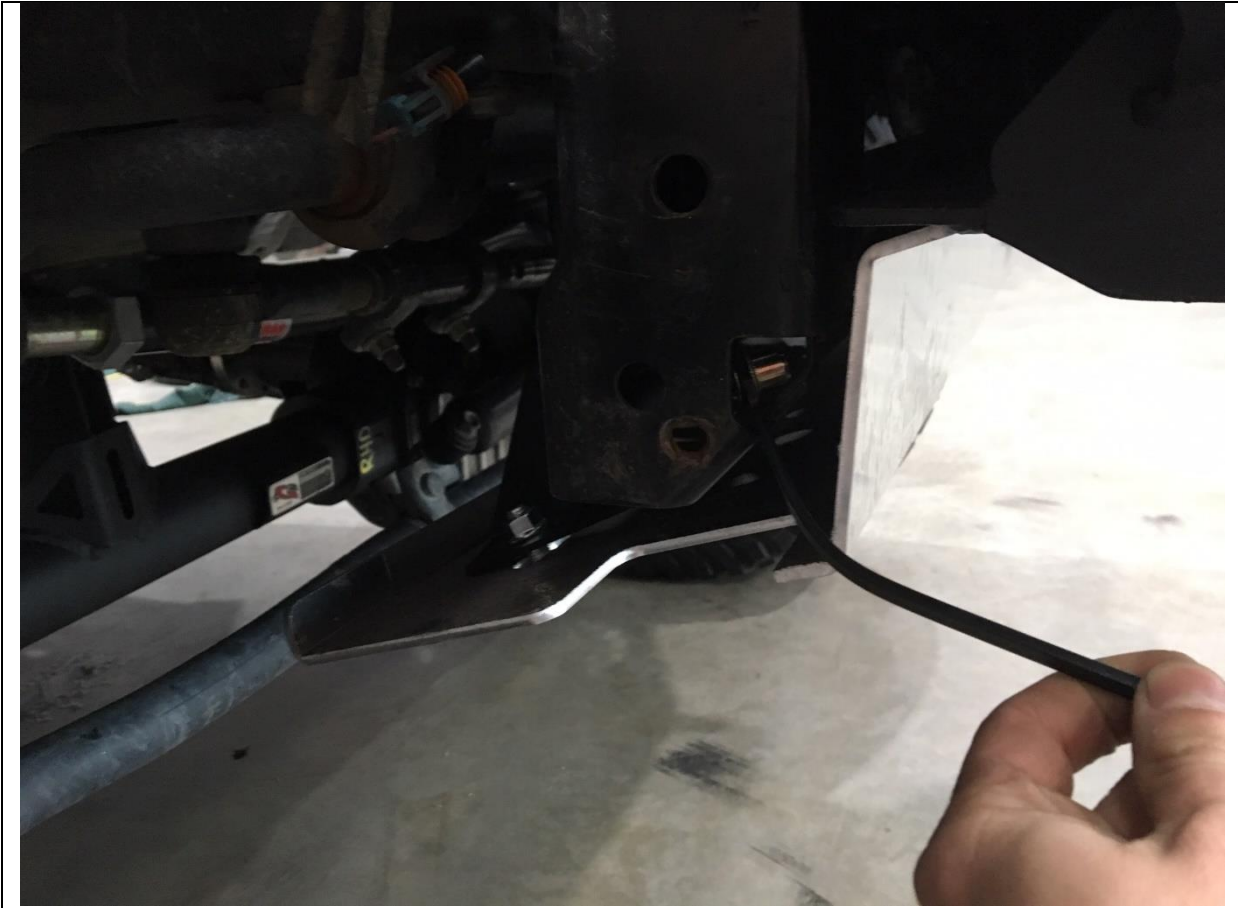
M12 x 30 (2)
M12 FW (2)
M12 SW (2)



26. If fitting optional skid plate, hold plate up to bottom of bull bar and start the 4 x M8 x 30 button head cap screws with washers to hold plate in place

TOOLS REQUIRED
5mm allen key

FASTENERS
M8 x 30 BHCS (4)
M8 FW (4)



- 27. Position Skid plate mount bracket as shown. Secure to skid plate with M10 bhcs. Leave loose for the moment. Repeat for other side.
- 28. Bending the steam on the nut plate position through gap as shown, and secure mount bracket to cross member with M10 hex bolt
- 29. Once all in position torque up all bolts securing skid plate to bar and vehicle.

TOOLS REQUIRED

- 6mm allen key**
- 16mm socket or spanner**

FASTENERS

- M10 x 30 hex (2)
- M10 x 25 BHCS (2)
- M10 FW (4)
- M10 nut plates Lollipops (2)
- M10 FN (2)



30. Offroad Animal suggest purchasing our Number plate flip and fitting as shown

TOOLS REQUIRED

FASTENERS



31. You're now finished, go out and enjoy your new bull bar

TOOLS REQUIRED

FASTENERS